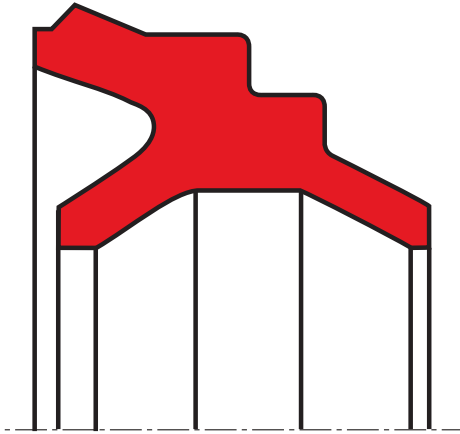


wiper A11-SC

seal spec



description

the A11-SC combination wiper seal without metal reinforcement with special pneumatic sealing edge.

the A11-SC type has a step profile that will facilitate the installation especially for the small diameters. this wiper has a rounded wiping lip.

application



not bolded symbols; please consult our technical for application limitations

category of profile

machined or molded/standard/trade product.

double acting

area of application: pneumatic

small cylinders.

advantages

- combination seal with minimal space requirements, which seals inwards and wipes outwards.
- the special pneumatic sealing edge gives very good tightness with low friction and maintains an effective lubricating film.
- material with high wear resistance for PU 85 shore A.
- both functions, sealing and wiping, are performed by a single seal.
- low assembly costs, easier storage.
- clean line finish and full function at minimal space requirement.
- adapted to CETOP dimensions.
- recess simple and economical to manufacture.
- no additional axial adjustment required.
- due to special lip geometry combined with specially developed compounds, the rod seal/wiper profile A11-SC can be used with dry and oil-free air after initial lubrication on assembly.
- smooth running thanks to optimal balance of sealing lips.
- no danger of corrosion as the part is made of polymeric material.

media:

dry or lubricated air, mineral oils and greases, non-aggressive gases.

**operating parameters & material**

material	temperature	max. surface speed	max. pressure ¹
NBR 80 Shore A	-20 °C ... +100 °C	1 m/s	10 bar (1 Mpa)
NBR 90 Shore A	-40 °C ... +100 °C	1 m/s	10 bar (1 Mpa)
PU 85 Shore A	-30 °C ... +90 °C	1 m/s	10 bar (1 Mpa)
PU 85 Shore A	-30 °C ... +80 °C	1 m/s	16 bar (1,6 Mpa)
PU 90 Shore A	-30 °C ... +80 °C	1 m/s	16 bar (1,6 Mpa)
PU 94 Shore A	-35 °C ... +80 °C	1 m/s	16 bar (1,6 Mpa)

the stated operation conditions represent general indications. it is recommended not to use all maximum values simultaneously. surface speed limits apply only to the presence of adequate lubrication film.

¹ pressure ratings are dependent on the size of the extrusion gap.

surface quality

surface roughness	Rtmax (µm)	Ra (µm)
sliding surface	according to seal data	
bottom of groove	≤4	<0,5
groove face	≤10	≤0,5

tolerance recommendation

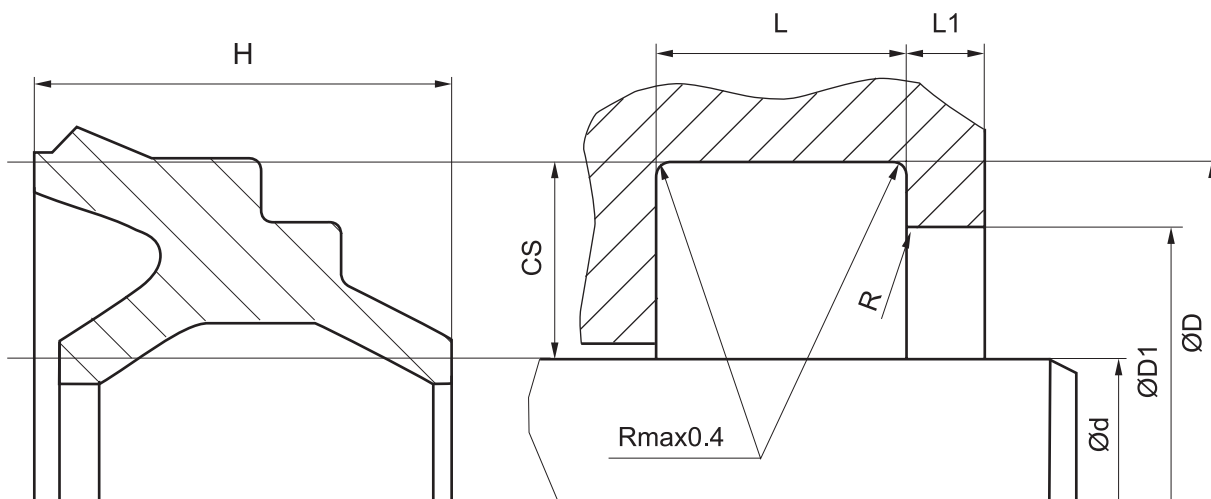
seal housing tolerances		cs	R [mm]
d	f9	≤ 5	max. 0,3
D	H10	>5.....≤ 7,5	max. 0,4
		>7,5.....≤ 10	max. 0,6
		> 10	max. 0,8

fitting & installation

Careful fitting is a prerequisite for the correct function of the seal. The A11-SC for small cylinders can be snapped by hand into the housing grooves provided, with the piston rod removed. It is important to remove all sharp edges from the groove and cylinder to prevent damage to the seals.

seal & housing recommendations

Please note that we are able to produce those profiles to your specific need or any non standard housing. For detail measurements, please see seal-mart catalog...



don't hesitate to contact our technical department for further information or for special requirements (temperature, speed etc.), so that suitable materials and/or designs can be recommended.